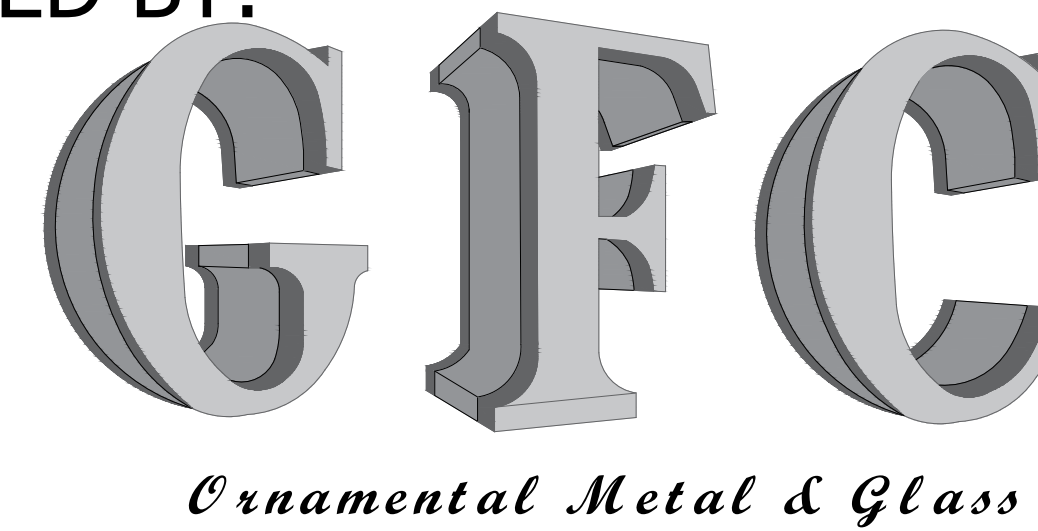


# UNITED NATIONS

## 21203-34 SG 38FI Conference Room

Architect: HLW

PREPARED BY:



GC: A W & S

TABLE of CONTENTS			SUBMISSION 11/12/2023
1	Z-01	Cover Sheet	•
2	Z-02	Plan	•
3	Z-03	Details	•
4	Z-04	Details	•

### FINISH SCHEDULE:

**MT-1** #4 BRUSHED Stainless Steel

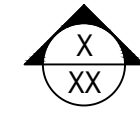
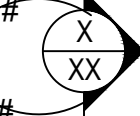
THESE DRAWINGS ARE THE SOLE PROPERTY OF GFC ORNAMENTAL METAL & GLASS AND MAY NOT BE USED OR DUPLICATED WITHOUT A WRITTEN CONSENT FROM GFC OMG. GFC OMG WILL NOT ASSUME RESPONSIBILITY FOR WORK ON ERRORS INCURRED BY OTHER TRADES SHOULD THESE DRAWINGS BE USED WITHOUT THE KNOWLEDGE OF GFC OMG.

ADDITIONAL COPIES ARE AVAILABLE UPON REQUEST.

Architectural drawings:	
Type:	Issue for ADD #1
Date:	09/23/2023

NO.	DATE	DESCRIPTION
△	12/04/23	AS PER ARCHITECT'S COMMENTS

### LEGENDS, SYMBOLS & ABBREVIATIONS:

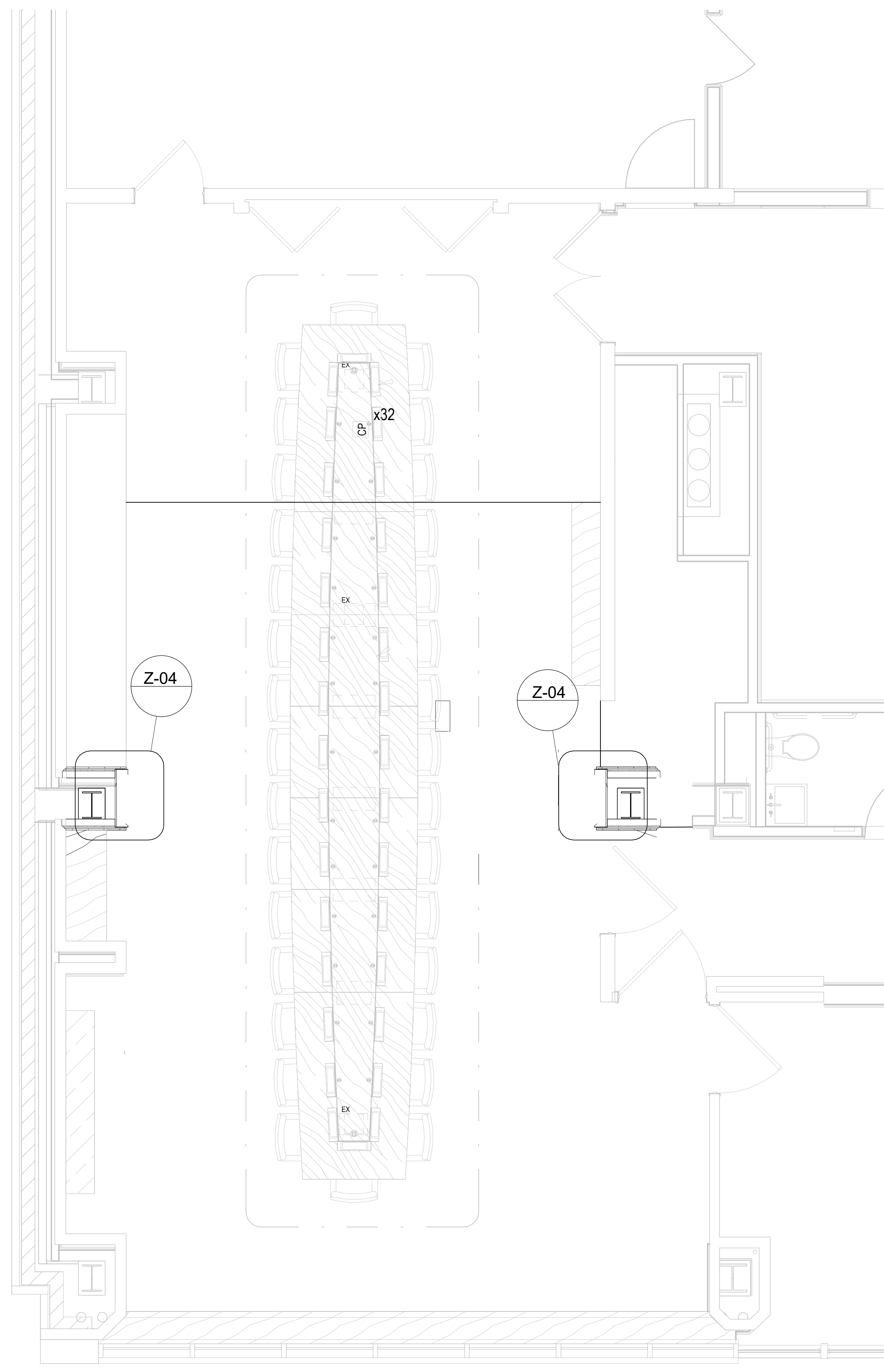
 <p>- ELEVATION CALLOUT: UPPER NUMBER DENOTES DRAWING REFERENCE, LOWER NUMBER DENOTES SHEET NUMBER</p>	 <p>- DETAIL CALLOUT: UPPER NUMBER DENOTES DRAWING REFERENCE LOWER NUMBER DENOTES SHEET NUMBER</p>	<p>A.F.F. ABOVE FINISH FLOOR ARCH. ARCHITECT B.O. BOTTOM OF B.T.B. BACK-TO-BACK C. CENTERLINE D.H. DOOR HEIGHT D.L. DAYLIGHT D.L.O. DAYLIGHT OPENING D.O. DOOR OPENING D.W. DOOR WIDTH F.O.G. FRONT OF GLASS G.S. GLASS SIZE HT. HEIGHT O.A. OVERALL</p>	<p>O.C. ON-CENTER OPP. OPPOSITE QTY. QUANTITY R.F. ROUGH OPENING REF. REFERENCE S.S. STAINLESS STEEL SIM. SIMILAR T.O.S. TOP OF SLAB T.O.F.F. TOP OF FINISH FLOOR TYP. TYPICAL V.I.F. VERIFY IN FIELD</p>
---	---	--	---

UNITED NATIONS	
PROPOSAL:	# 23-897
DATE: (First date of issue)	11/10/23
DRAWN BY: Leo	P.M.: F.Z.

3

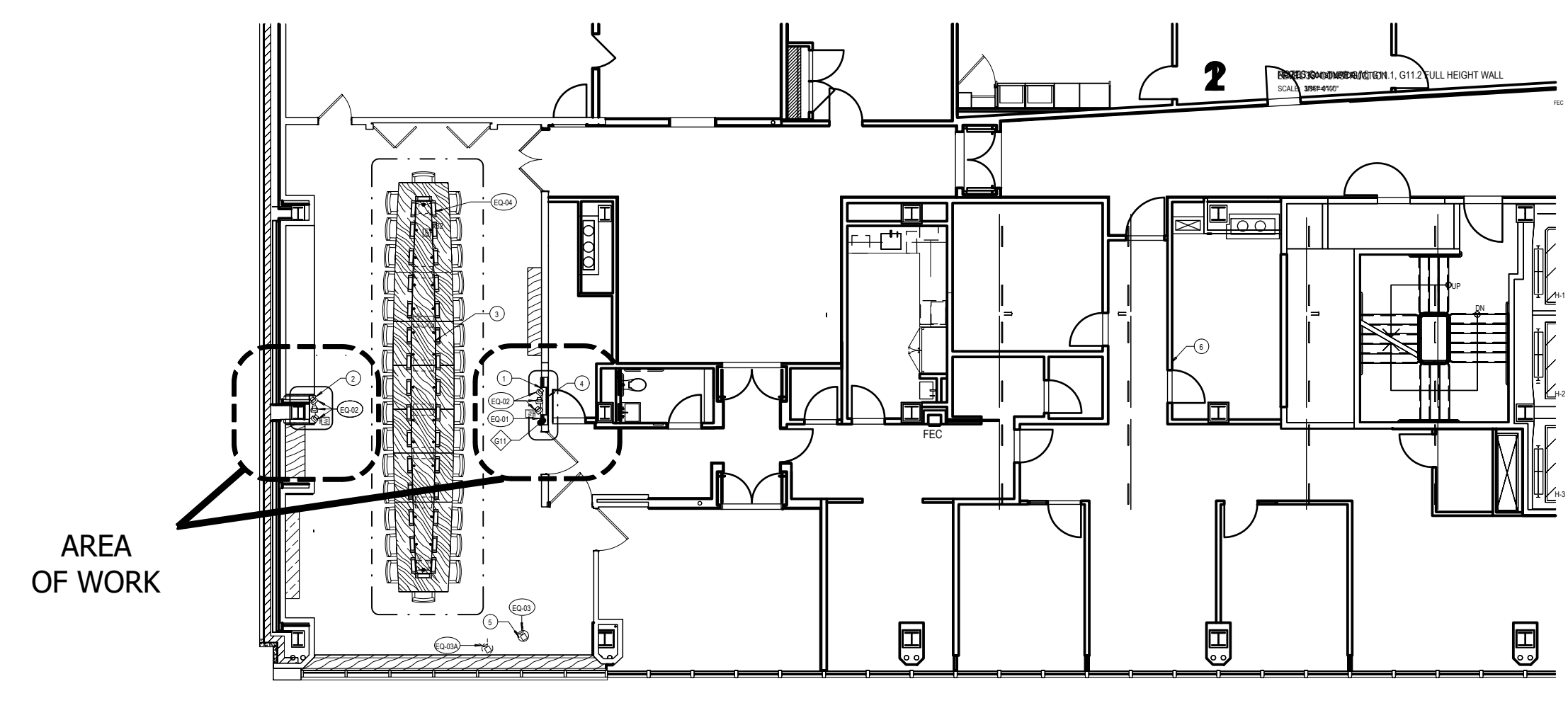
2

1



PLAN of CONFERENCE CENTER

Scale: NTS



KEY PLAN of 3rd FLOOR

Scale: NTS

Finishes

MT-1 #4 BRUSHED Stainless Steel

General Notes

1. ALL DIMENSIONS TO BE FIELD IN VERIFIED PRIOR TO FABRICATION & INSTALLATION.
2. SEE OTHER DRAWINGS FOR MORE NOTES.
3. CAULKING AT BUTT JOINTS TYPICAL.
4. MINIMUM 1/8" GAP, U.O.N.
5. WRITTEN DIMENSIONS SUPERCEDE ALL SCALED DIMENSIONS.
6. ALL FASTENERS ARE 300 SERIES STAINLESS STEEL, U.O.N.
7. METAL STUD FRAMING & WOOD BLOCKING NOT BY GFC OMG.
8. ALL GLASS JOINTS, ALL GLASS SIZES WILL HAVE A TOLERANCE OF ±1/8", U.O.N.
9. SEE GFC OMG DWG # Z-000 FOR GLASS FINISH SCHEDULES & LOCATION OF ALL ITEMS.
10. ANY MATERIALS LISTED w/LEAD TIMES ARE APPROX. AFTER FIELD SIZES HAVE BEEN TAKEN OR APPROVED / GUARANTEED DIMENSIONS.
11. GFC EXCLUDES THE FOLLOWING: ELECTRIC WIRING & HOOK-UP, WOOD BLOCKING, METAL STUD FRAMING, AND SUPPORTS, REMOVALS, CHOPPING, PATCHING OF EXISTING, ANYTHING NOT SPECIFICALLY CALLED OUT ON GFC SHOP DWGS FINISHES FINAL CLEANING & PROTECTION.

KEY PLAN:

INFORMATION ON THIS DOCUMENT IS PROPRIETARY AND SHALL NOT BE USED, COPIED, REPRODUCED, DISCLOSED IN WHOLE OR IN PART WITHOUT WRITTEN CONSENT OF GFC ORNAMENTAL METAL AND GLASS, LLC. GFC ORNAMENTAL METAL AND GLASS, LLC ASSUMES NO RESPONSIBILITY FOR ANY ERRONEOUS WORK PERFORMED BY OTHER TRADES USING THESE DRAWINGS.

No.	Revision/Issue	Date
1	AS PER ARCHITECT'S COMMENTS	12/04/23

Prepared by  
**G.F.C.** | ORNAMENTAL METAL & GLASS, LLC.  
2200 JERICHO TPKE  
NEW HYDE PARK, NY  
Tel: (516) 880-4655  
www.gfc-omg.com

A W & S

Architect HLW

**UNITED NATIONS**

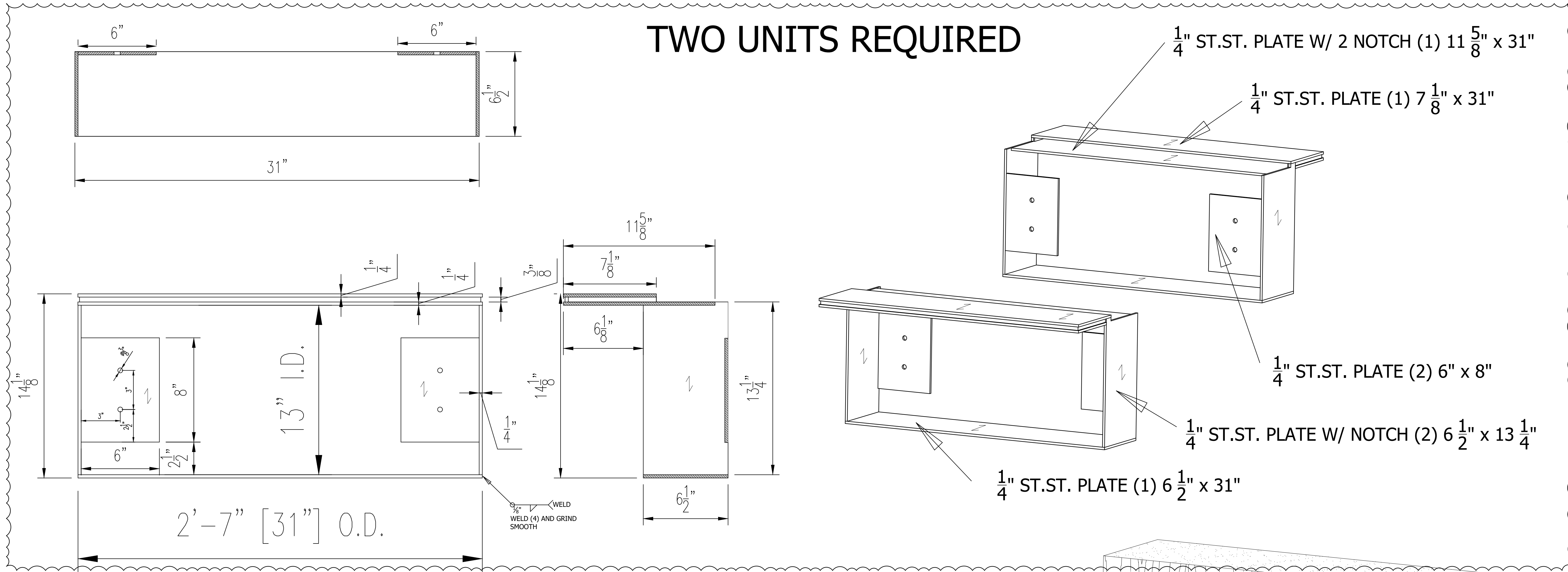
21203-34 SG 38F1 Conference Room

Title  
**PLAN**

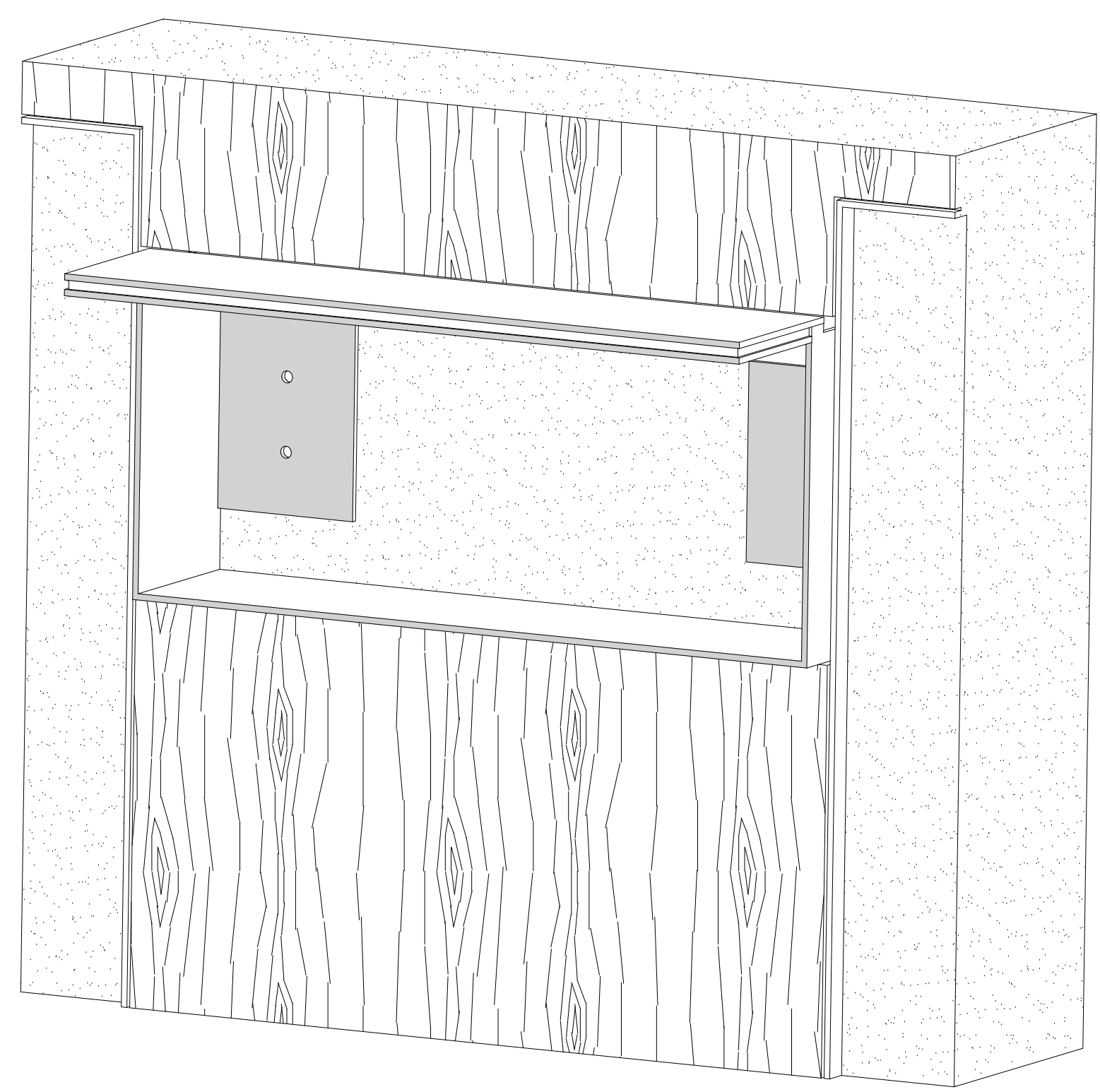
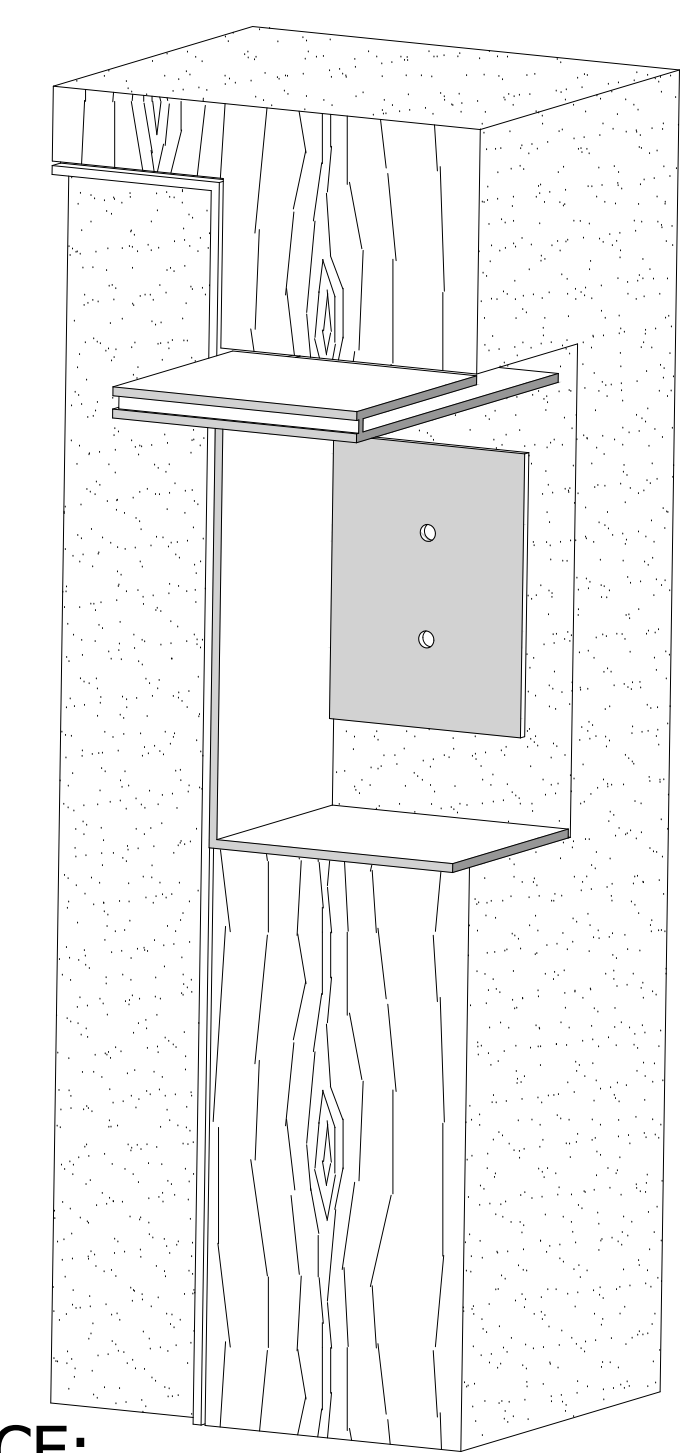
PM F.Z.	Scale: (ARCH-D) <b>SEE NOTED</b>	Sheet No.
Drawn by Leo	First date of issue 10/15/23	<b>Z-02</b>
Checked by G.Z.	Job No.	
Approved by G.Z.		

Director: G. Vesera Vespa | GFC Ornamental Metal and Glass | V23839 | UN-IP-04-23-omg | Date: 04-Dec-2023 | 12:00 - By: isopb

# TWO UNITS REQUIRED

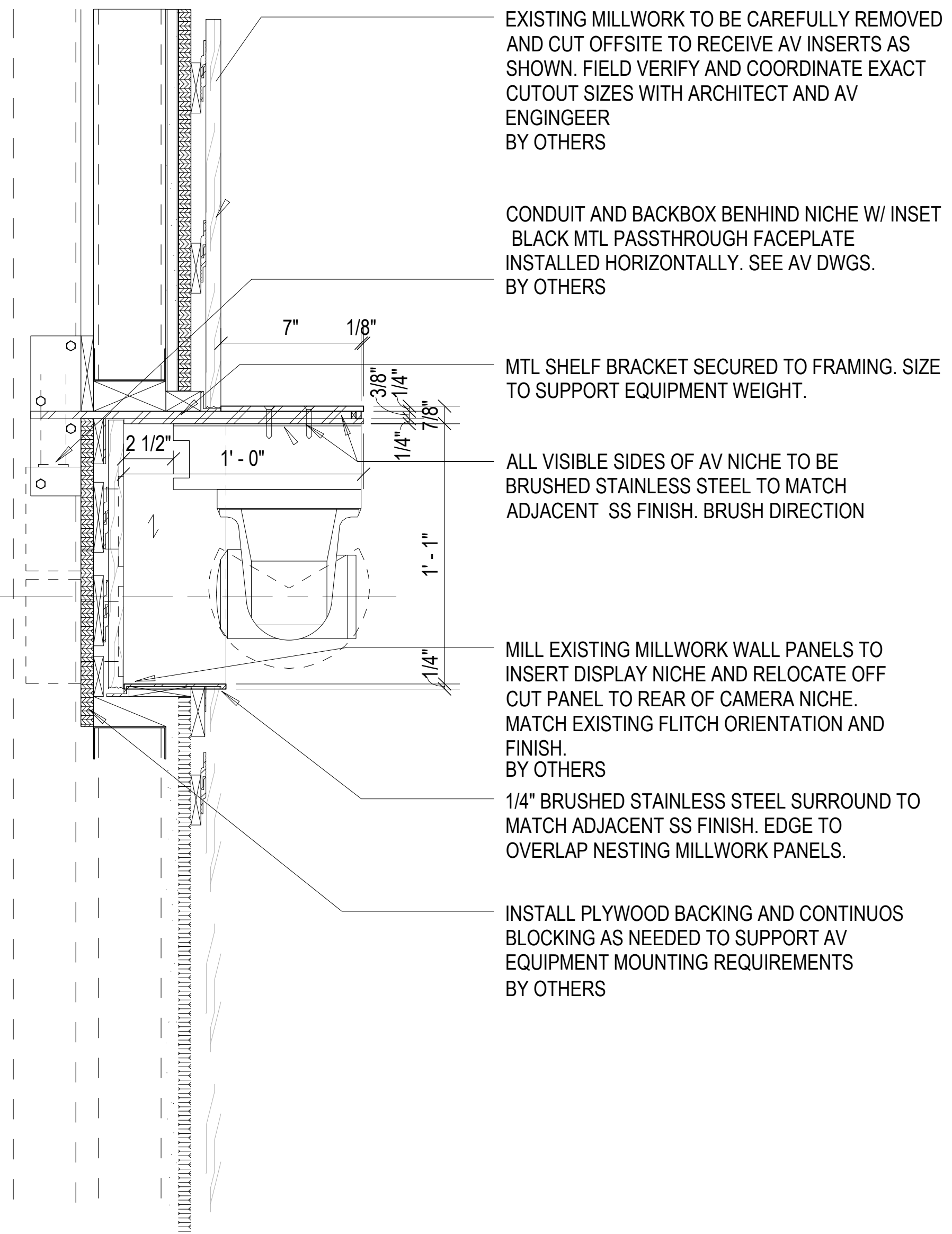


FOR REFERENCE:  
SECTION THROUGH THE FRAME.



**1/4" BRUSHED STAINLESS STEEL**  
SURROUND TO MATCH ADJACENT SS FINISH EDGE  
TO OVERLAP NESTING MILLWORK PANELS

Finishes		
#4 BRUSHED Stainless Steel		
General Notes		
1. ALL DIMENSIONS TO BE FIELD IN VERIFIED PRIOR TO FABRICATION & INSTALLATION.		
2. SEE OTHER DRAWINGS FOR MORE NOTES.		
3. CAULKING AT BUTT JOINTS TYPICAL.		
4. MINIMUM 1/8" GAP, U.O.N.		
5. WRITTEN DIMENSIONS SUPERCEDE ALL SCALED DIMENSIONS.		
6. ALL FASTENERS ARE 300 SERIES STAINLESS STEEL, U.O.N.		
7. METAL STUD FRAMING & WOOD BLOCKING NOT BY GFC O.M.G.		
8. ALL GLASS JOINTS, ALL GLASS SIZES WILL HAVE A TOLERANCE OF ±1/8", U.O.N.		
9. SEE GFC O.M.G. DWG # Z-000 FOR GLASS FINISH SCHEDULES & LOCATION OF ALL ITEMS.		
10. ANY MATERIALS LISTED w/LEAD TIMES ARE APPROX. AFTER FIELD SIZES HAVE BEEN TAKEN OR APPROVED / GUARANTEED DIMENSIONS.		
11. GFC EXCLUDES THE FOLLOWING ELECTRIC WIRING & HOOK-UP, WOOD BLOCKING, METAL STUD FRAMING, AND SUPPORTS, REMOVALS, CHOPPING, PATCHING OF EXISTING, ANYTHING NOT SPECIFICALLY CALLED OUT ON GFC SHOP DWGS FINISHES FINAL CLEANING & PROTECTION.		
KEY PLAN:		
INFORMATION ON THIS DOCUMENT IS PROPRIETARY AND SHALL NOT BE USED, COPIED, REPRODUCED, DISCLOSED IN WHOLE OR IN PART WITHOUT WRITTEN CONSENT OF GFC ORNAMENTAL METAL AND GLASS, LLC. GFC ORNAMENTAL METAL AND GLASS, LLC ASSUMES NO RESPONSIBILITY FOR ANY ERRONEOUS WORK PERFORMED BY OTHER TRADES USING THESE DRAWINGS.		
AS PER ARCHITECT'S COMMENTS 12/04/23		
No.	Revision/Issue	Date
Prepared by		
G.F.C.		ORNAMENTAL METAL & GLASS, LLC. 2200 JERICHO TPKE NEW HYDE PARK, NY Tel: (516) 884-4655 www.gfc-omg.com
A W & S		
Architect HLW		
UNITED NATIONS		
21203-34 SG 38FI Conference Room		
Title		
Details		
PM	Scale: (ARCH-D)	Sheet No.
F.Z.	SEE NOTED	
Drawn by	First date of issue	
Leo	10/15/23	Z-03
Checked by	Job No.	
G.Z.		
Approved by		
G.Z.		



EXISTING MILLWORK TO BE CAREFULLY REMOVED AND CUT OFFSITE TO RECEIVE AV INSERTS AS SHOWN. FIELD VERIFY AND COORDINATE EXACT CUTOUT SIZES WITH ARCHITECT AND AV ENGINEER BY OTHERS

CONDUIT AND BACKBOX BENHIND NICHE W/ INSET BLACK MTL PASSTHROUGH FACEPLATE INSTALLED HORIZONTALLY. SEE AV DWGS. BY OTHERS

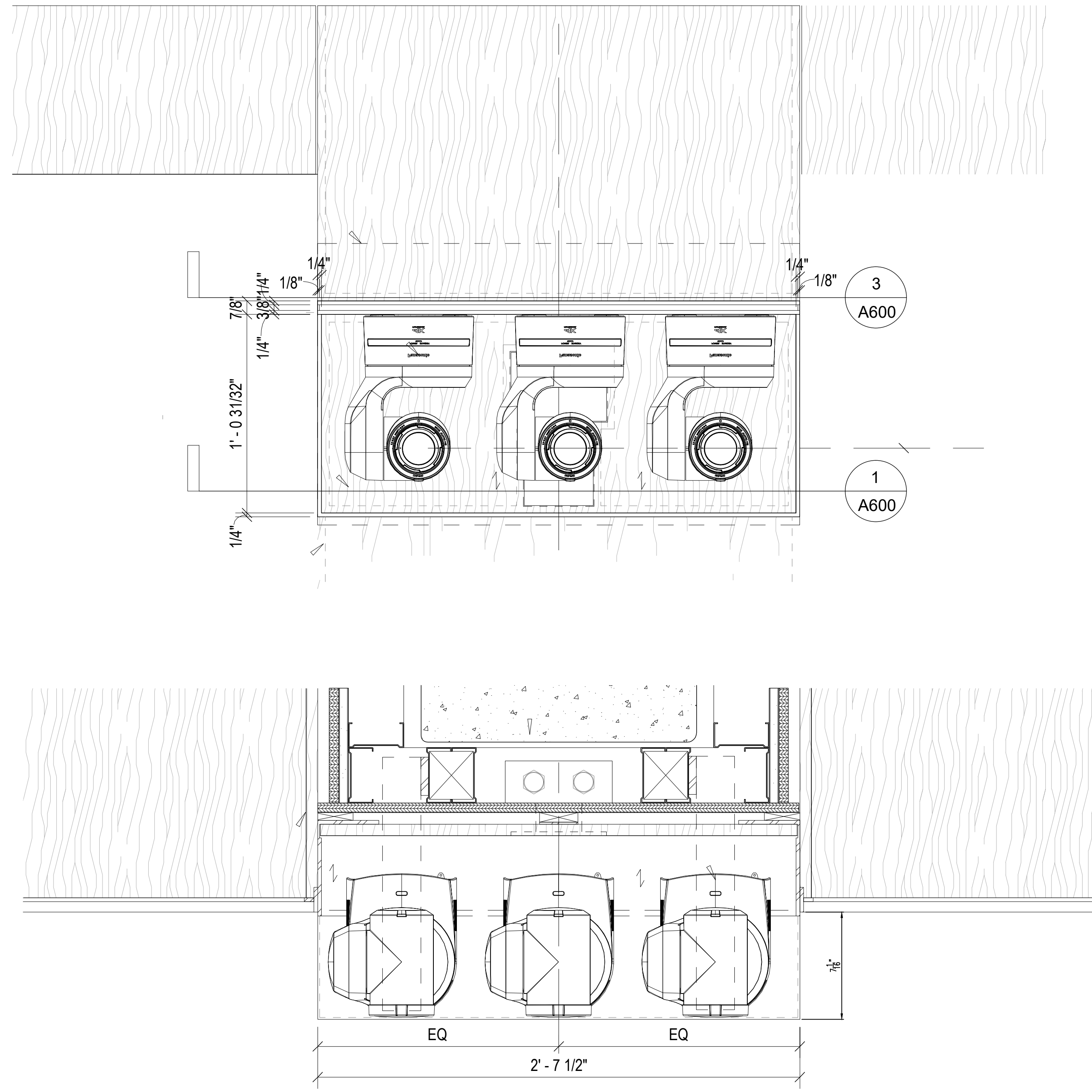
MTL SHELF BRACKET SECURED TO FRAMING. SIZE TO SUPPORT EQUIPMENT WEIGHT.

ALL VISIBLE SIDES OF AV NICHE TO BE BRUSHED STAINLESS STEEL TO MATCH ADJACENT SS FINISH. BRUSH DIRECTION

MILL EXISTING MILLWORK WALL PANELS TO INSERT DISPLAY NICHE AND RELOCATE OFF CUT PANEL TO REAR OF CAMERA NICHE. MATCH EXISTING FLITCH ORIENTATION AND FINISH. BY OTHERS

1/4" BRUSHED STAINLESS STEEL SURROUND TO MATCH ADJACENT SS FINISH. EDGE TO OVERLAP NESTING MILLWORK PANELS.

INSTALL PLYWOOD BACKING AND CONTINUOUS BLOCKING AS NEEDED TO SUPPORT AV EQUIPMENT MOUNTING REQUIREMENTS BY OTHERS



<b>Finishes</b>		
#4 BRUSHED Stainless Steel		
<b>General Notes</b>		
1. ALL DIMENSIONS TO BE FIELD IN VERIFIED PRIOR TO FABRICATION & INSTALLATION. 2. SEE OTHER DRAWINGS FOR MORE NOTES. 3. CAULKING AT BUTT JOINTS TYPICAL. 4. MINIMUM 1/8" GAP, U.O.N. 5. WRITTEN DIMENSIONS SUPERCEDE ALL SCALED DIMENSIONS. 6. ALL FASTENERS ARE 300 SERIES STAINLESS STEEL, U.O.N. 7. METAL STUD FRAMING & WOOD BLOCKING NOT BY GFC OMG. 8. ALL GLASS JOINTS. ALL GLASS SIZES WILL HAVE A TOLERANCE OF ±1/8", U.O.N. 9. SEE GFC OMG DWG # Z-000 FOR GLASS FINISH SCHEDULES & LOCATION OF ALL ITEMS. 10. ANY MATERIALS LISTED W/ LEAD TIMES ARE APPROX. AFTER FIELD SIZES HAVE BEEN TAKEN OR APPROVED / GUARANTEED DIMENSIONS. 11. GFC EXCLUDES THE FOLLOWING ELECTRIC WIRING & HOOK-UP, WOOD BLOCKING, METAL STUD FRAMING, AND SUPPORTS. REMOVALS, CHOPPING, PATCHING OF EXISTING ANYTHING NOT SPECIFICALLY CALLED OUT ON GFC SHOP DWGS FINISHES FINAL CLEANING & PROTECTION.		
<b>KEY PLAN:</b>		
<small>INFORMATION ON THIS DOCUMENT IS PROPRIETARY AND SHALL NOT BE USED, COPIED, REPRODUCED, DISCLOSED IN WHOLE OR IN PART WITHOUT WRITTEN CONSENT OF GFC ORNAMENTAL METAL AND GLASS, LLC. GFC ORNAMENTAL METAL AND GLASS, LLC ASSUMES NO RESPONSIBILITY FOR ANY ERRONEOUS WORK PERFORMED BY OTHER TRADES USING THESE DRAWINGS.</small>		
AS PER ARCHITECT'S COMMENTS		12/04/23
No.	Revision/Issue	Date
Prepared by <b>G.F.C.</b>   ORNAMENTAL METAL & GLASS, LLC. 2200 JERICHO TPKE NEW HYDE PARK, NY Tel: (516) 880-4655 www.gfc-omg.com		
<b>A W &amp; S</b>		
<b>Architect HLW</b>		
<b>UNITED NATIONS</b>		
21203-34 SG 38F1 Conference Room		
Title		
Details		
PM	Scale: (ARCH-D)	Sheet No.
F.Z.	<b>SEE NOTED</b>	<b>Z-04</b>
Drawn by	First date of issue	
Leo	10/15/23	
Checked by	Job No.	
G.Z.	.	
Approved by		
G.Z.		

Director: G. Vesera Vespa | GFC Ornamental Metal and Glass | 21203-34 SG 38F1 - Rev. 1 - GFC-omg-UN-IP-04-23-omg-Boat-04-Dec-2023 12:00 - By: ipost