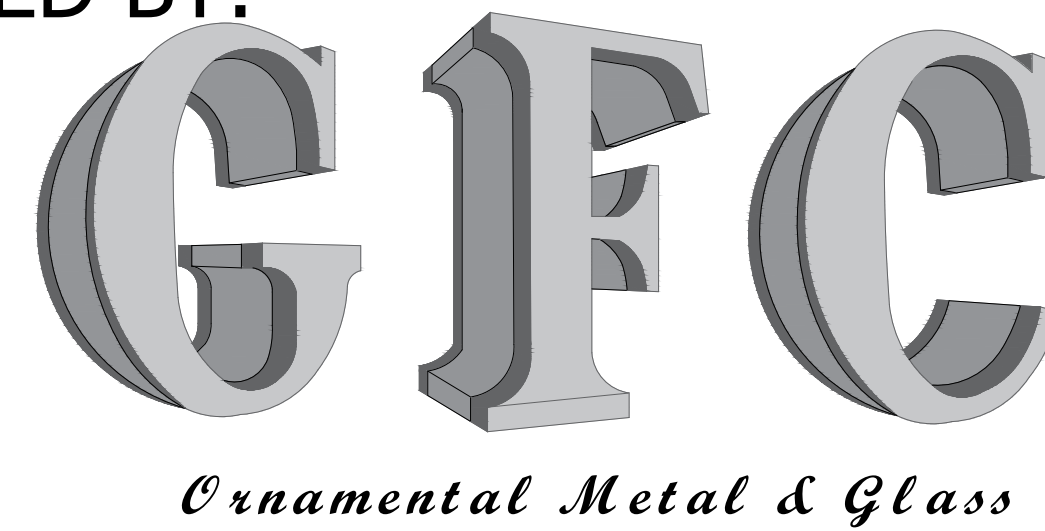


Hudson Bay Capital

290 Harbor Drive

ARCHITECT:
MKDA

PREPARED BY:



General contractor:
James E Fitzgerald

THESE DRAWINGS ARE THE SOLE PROPERTY OF GFC ORNAMENTAL METAL & GLASS AND MAY NOT BE USED OR DUPLICATED WITHOUT A WRITTEN CONSENT FROM GFC OMG. GFC OMG WILL NOT ASSUME RESPONSIBILITY FOR WORK ON ERRORS INCURRED BY OTHER TRADES SHOULD THESE DRAWINGS BE USED WITHOUT THE KNOWLEDGE OF GFC OMG.

ADDITIONAL COPIES ARE AVAILABLE UPON REQUEST.

FINISH SCHEDULE:

- 1/4" CLEAR FRAMED MIRRORS
- 3/8" CLEAR TEMPERED GLASS SHOWER PANELS
- 1/2" LOW IRON TEMPERED GLASS SHELVES
- GL-2 MAGNETIC MARKER BOARD
- 1/2" ACID ETCH TEMPERED GLASS SHOWER DOORS,
- 1/2" CLEAR TEMPERED CLEARSTORY GLASS

TABLE of CONTENTS			SUBMISSION
			12/06/2023
1	Z-01	Cover Sheet	•
2	Z-02	Plan	•
3	Z-03	Details	•
4	Z-04	Details	•

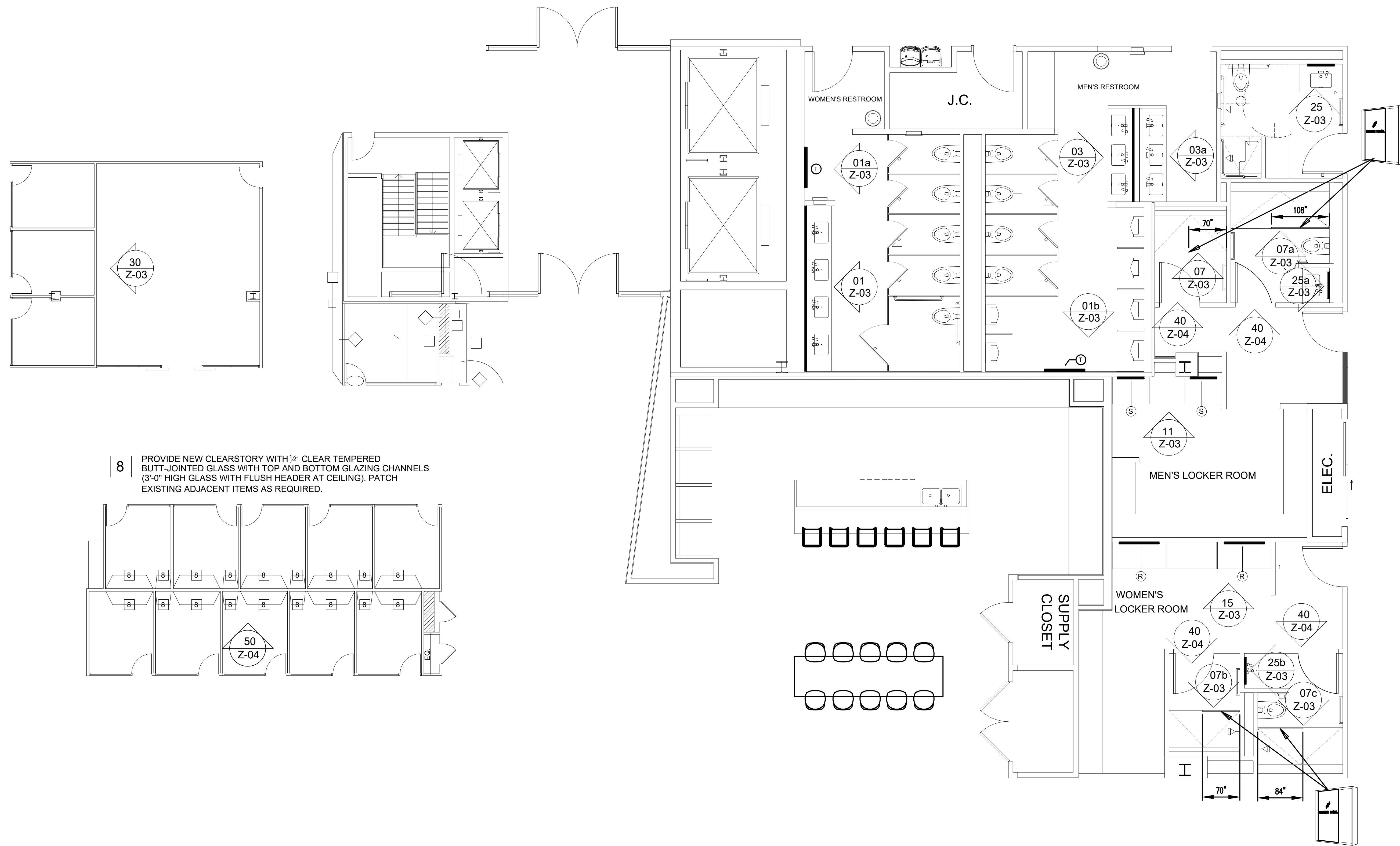
LEGENDS, SYMBOLS & ABBREVIATIONS:

	<p>- ELEVATION CALLOUT: UPPER NUMBER DENOTES DRAWING REFERENCE, LOWER NUMBER DENOTES SHEET NUMBER</p>	<p>A.F.F. ABOVE FINISH FLOOR ARCH. ARCHITECT B.O. BOTTOM OF B.T.B. BACK-TO-BACK C. CENTERLINE D.H. DOOR HEIGHT D.L. DAYLIGHT D.L.O. DAYLIGHT OPENING D.O. DOOR OPENING D.W. DOOR WIDTH F.O.G. FRONT OF GLASS G.S. GLASS SIZE HT. HEIGHT O.A. OVERALL</p>	<p>O.C. ON-CENTER OPP. OPPOSITE QTY. QUANTITY R.F. ROUGH OPENING REF. REFERENCE S.S. STAINLESS STEEL SIM. SIMILAR T.O.S. TOP OF SLAB T.O.F.F. TOP OF FINISH FLOOR TYP. TYPICAL V.I.F. VERIFY IN FIELD</p>
	<p>- DETAIL CALLOUT: UPPER NUMBER DENOTES DRAWING REFERENCE LOWER NUMBER DENOTES SHEET NUMBER</p>		

Architectural drawings:	
Type:	
Date:	

NO.	DATE	DESCRIPTION

Hudson Bay Capital	
PROPOSAL:	# 231058
DATE: (First date of issue)	12/06/23
DRAWN BY:	P.M.:
Leo	F.Z.



8 PROVIDE NEW CLEARSTORY WITH 1/2" CLEAR TEMPERED BUTT-JOINTED GLASS WITH TOP AND BOTTOM GLAZING CHANNELS (3'-0" HIGH GLASS WITH FLUSH HEADER AT CEILING). PATCH EXISTING ADJACENT ITEMS AS REQUIRED.

1 RESTROOM PLAN
SCALE: 1/8" = 1'-0"

Finishes

General Notes

1. ALL DIMENSIONS TO BE FIELD IN VERIFIED PRIOR TO FABRICATION & INSTALLATION.
2. SEE OTHER DRAWINGS FOR MORE NOTES.
3. CAULKING AT BUTT JOINTS TYPICAL.
4. MINIMUM 1/8" GAP, U.O.N.
5. WRITTEN DIMENSIONS SUPERCEDE ALL SCALED DIMENSIONS.
6. ALL FASTENERS ARE 300 SERIES STAINLESS STEEL, U.O.N.
7. METAL STUD FRAMING & WOOD BLOCKING NOT BY GFC OMG.
8. ALL GLASS JOINTS. ALL GLASS SIZES WILL HAVE A TOLERANCE OF ±1/8", U.O.N.
9. SEE GFC OMG DWG # Z-000 FOR GLASS FINISH SCHEDULES & LOCATION OF ALL ITEMS.
10. ANY MATERIALS LISTED w/LEAD TIMES ARE APPROX. AFTER FIELD SIZES HAVE BEEN TAKEN OR APPROVED / GUARANTEED DIMENSIONS.
11. GFC EXCLUDES THE FOLLOWING ELECTRIC WIRING & HOOK-UP, WOOD BLOCKING, METAL STUD FRAMING, AND SUPPORTS, REMOVALS, CHOPPING, PATCHING OF EXISTING. ANYTHING NOT SPECIFICALLY CALLED OUT ON GFC SHOP DWGS FINISHES FINAL CLEANING & PROTECTION.

KEY PLAN:

INFORMATION ON THIS DOCUMENT IS PROPRIETARY AND SHALL NOT BE USED, COPIED, REPRODUCED, DISCLOSED IN WHOLE OR IN PART WITHOUT WRITTEN CONSENT OF GFC ORNAMENTAL METAL AND GLASS, LLC. GFC ORNAMENTAL METAL AND GLASS, LLC ASSUMES NO RESPONSIBILITY FOR ANY ERRONEOUS WORK PERFORMED BY OTHER TRADES USING THESE DRAWINGS.

No.	Revision/Issue	Date

Prepared by
G.F.C. | ORNAMENTAL METAL & GLASS, LLC.
2200 JERICHO TPKE
NEW HYDE PARK, NY
Tel: (516) 880-4655
www.gfc-omg.com

ARCHITECT:

MKDA

General contractor:

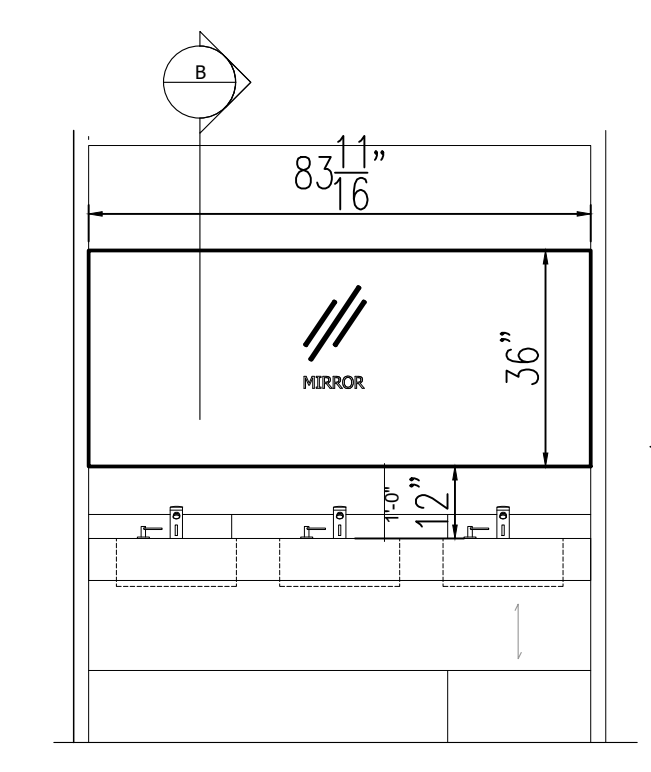
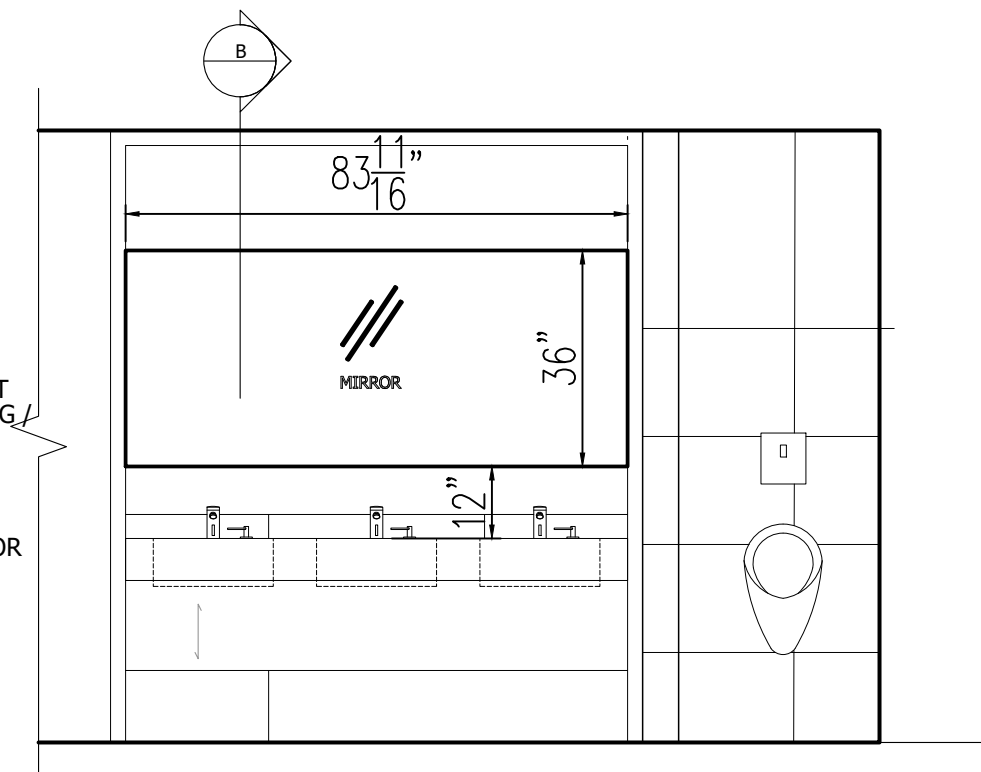
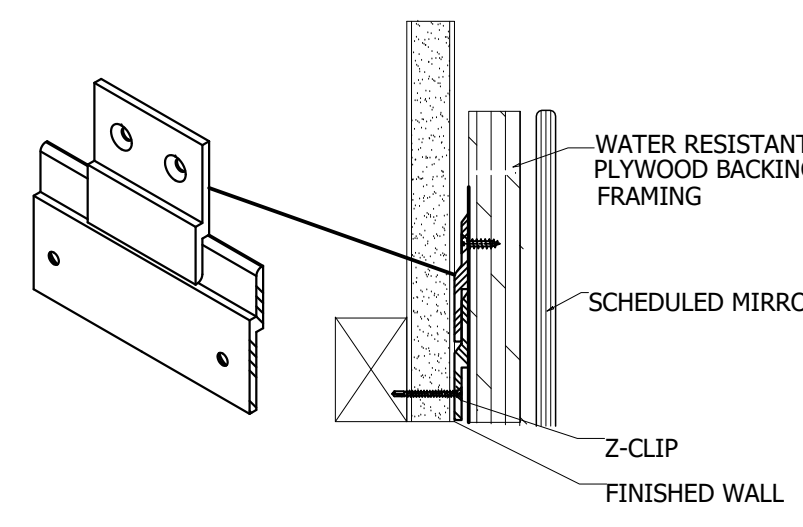
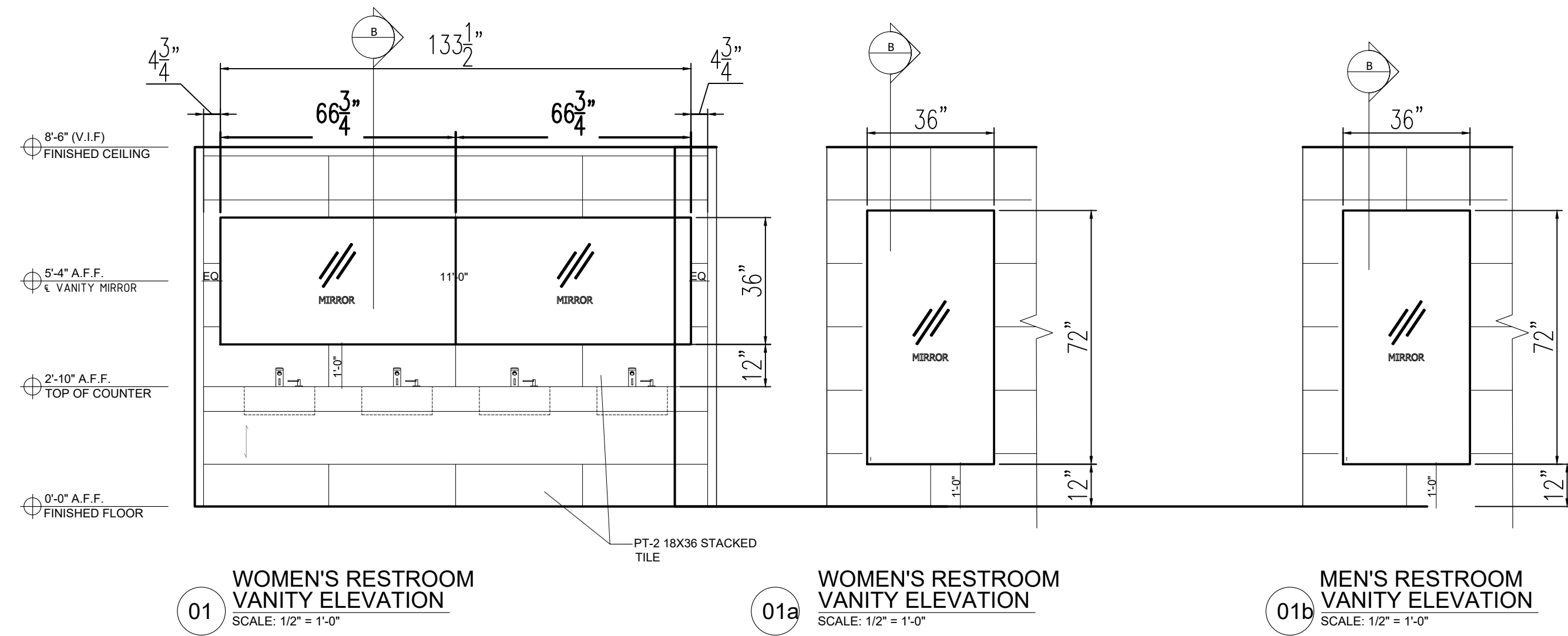
James E Fitzgerald

Hudson Bay Capital

Title
PLAN

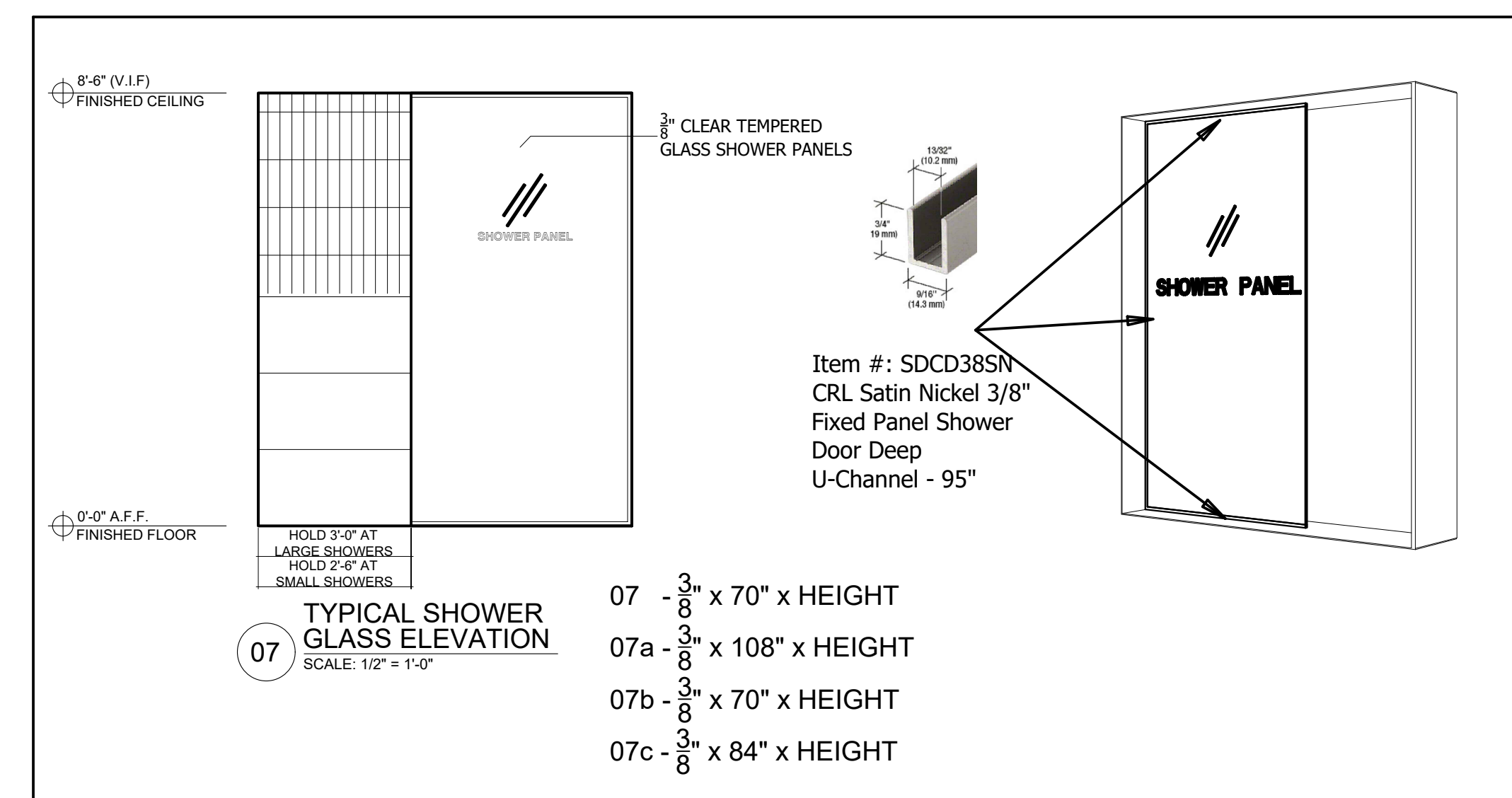
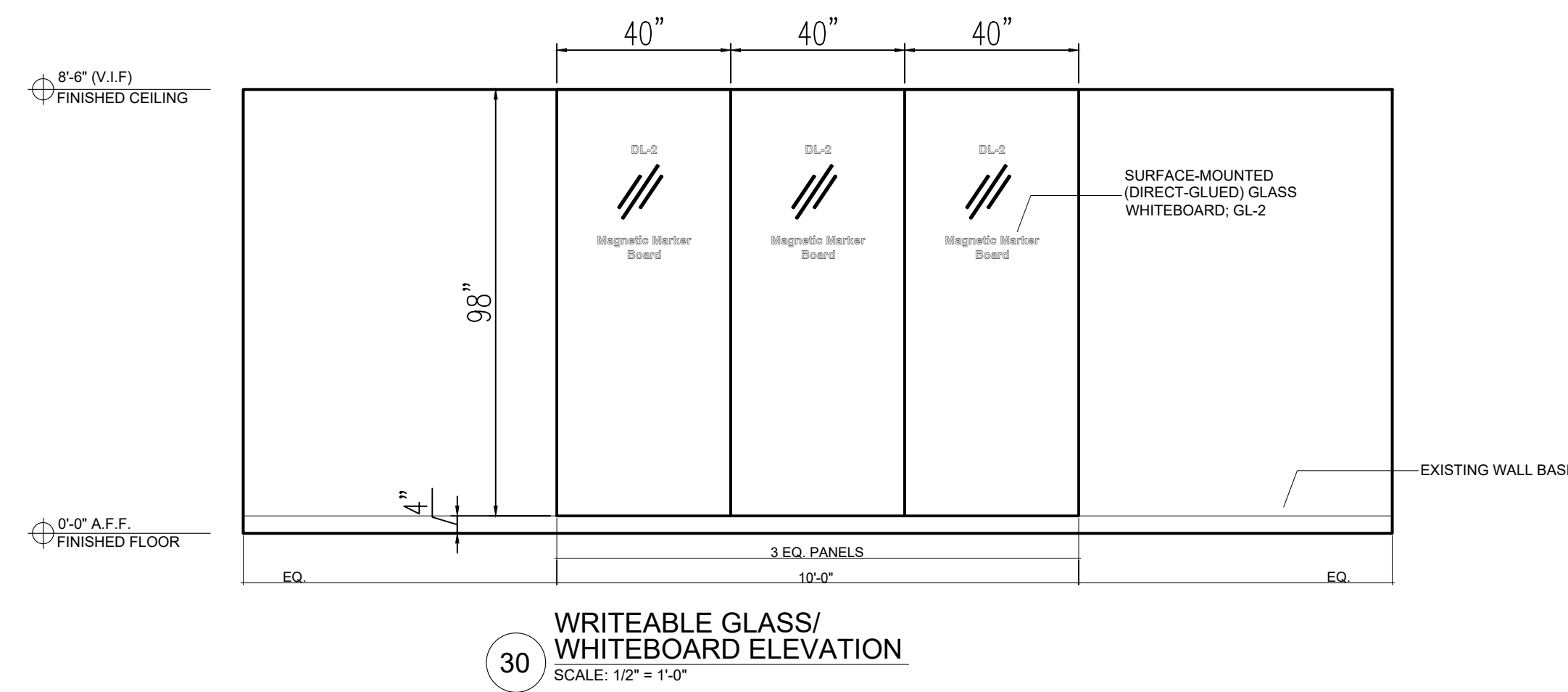
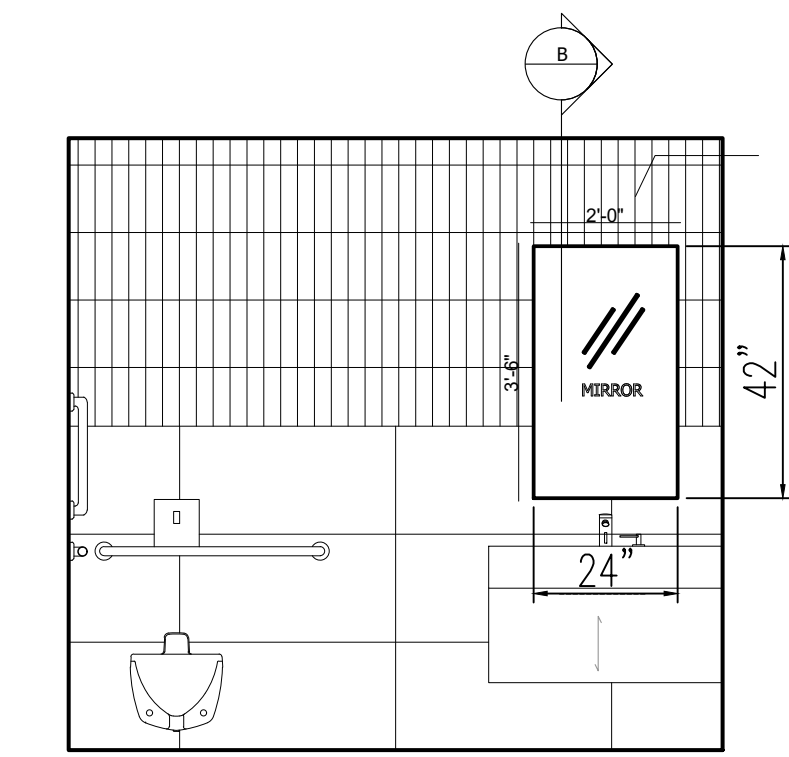
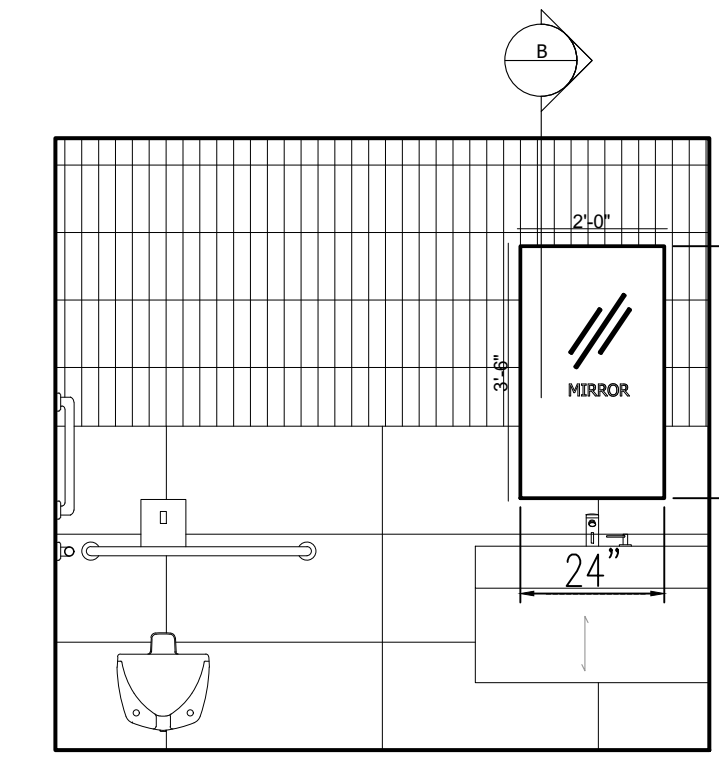
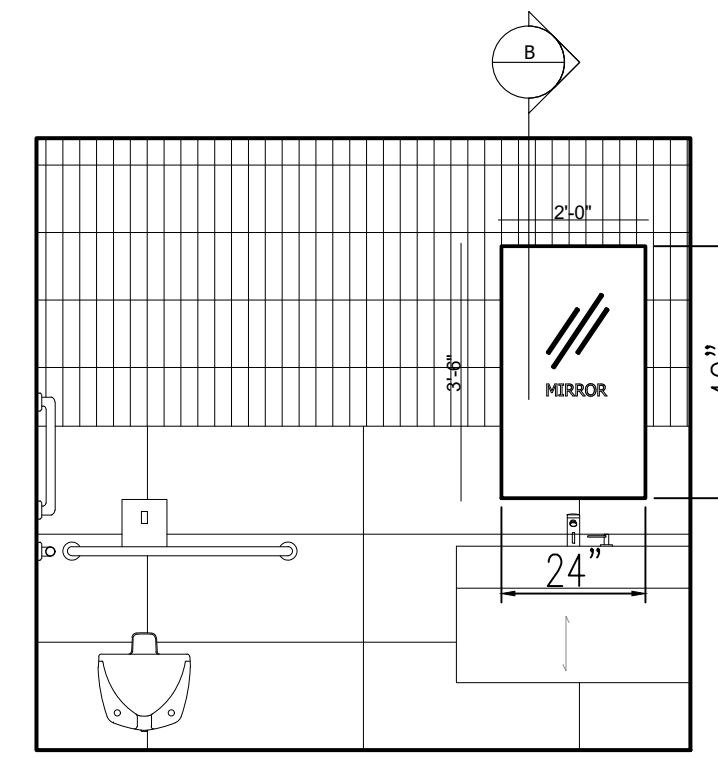
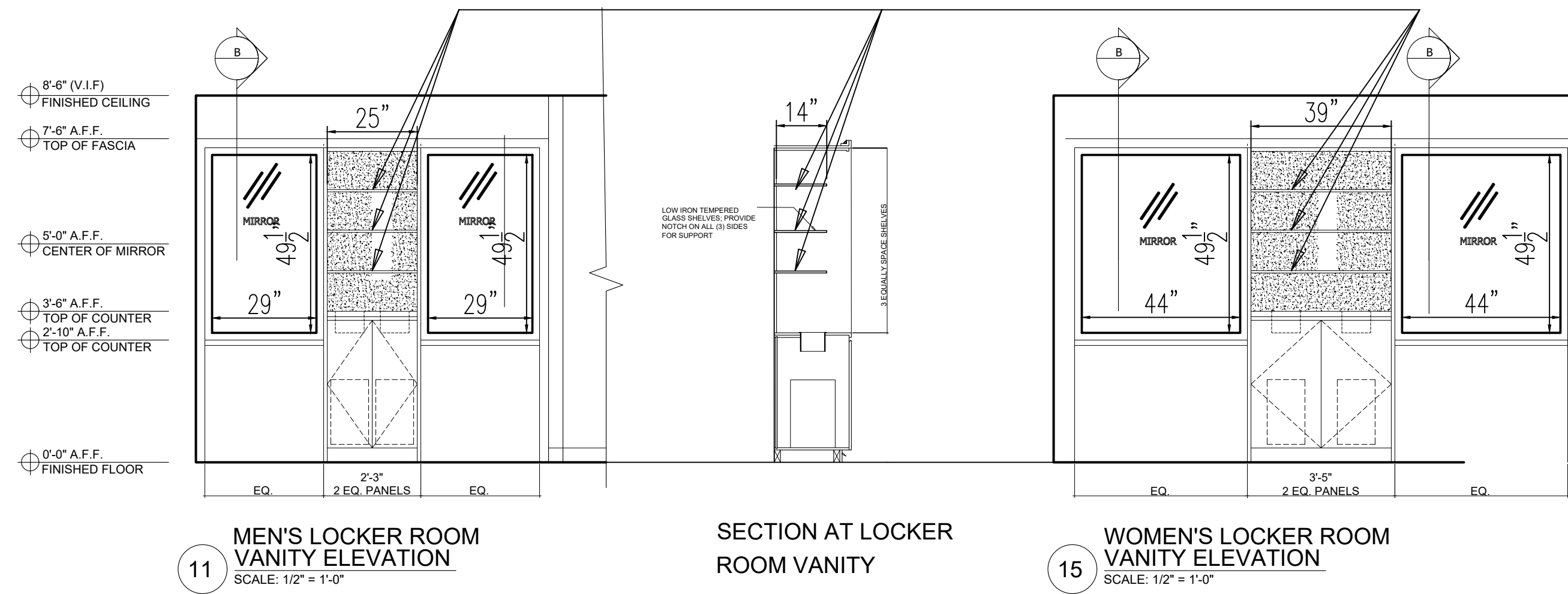
PM F.Z.	Scale: (ARCH-D) SEE NOTED	Sheet No.
Drawn by Leo	First date of issue 12/06/23	Z-02
Checked by G.Z.	Job No. 231157	
Approved by G.Z.		

Director: G. Userra | Designer: M. and G. Userra | GFC Ornamental Metal and Glass | 231058 Hudson Bay Capital 280 Harbor Dr. 3rd Floor New York, NY 10001 | Date: 11 Dec 2023 | 13:52 - By: esep



1/4" CLEAR FRAMED MIRRORS

3/8" LOW IRON TEMPERED GLASS SHELVES; PROVIDE NOTCH ON ALL (3) SIDES FOR SUPPORT



Finishes

General Notes

- ALL DIMENSIONS TO BE FIELD IN VERIFIED PRIOR TO FABRICATION & INSTALLATION.
- SEE OTHER DRAWINGS FOR MORE NOTES.
- CAULKING AT BUTT JOINTS TYPICAL.
- MINIMUM 1/8" GAP, U.O.N.
- WRITTEN DIMENSIONS SUPERCEDE ALL SCALED DIMENSIONS.
- ALL FASTENERS ARE 300 SERIES STAINLESS STEEL, U.O.N.
- METAL STUD FRAMING & WOOD BLOCKING NOT BY GFC O.M.G.
- ALL GLASS JOINTS, ALL GLASS SIZES WILL HAVE A TOLERANCE OF ±1/8", U.O.N.
- SEE GFC O.M.G. DWG # Z-000 FOR GLASS FINISH SCHEDULES & LOCATION OF ALL ITEMS.
- ANY MATERIALS LISTED w/LEAD TIMES ARE APPROX. AFTER FIELD SIZES HAVE BEEN TAKEN OR APPROVED / GUARANTEED DIMENSIONS.
- GFC EXCLUDES THE FOLLOWING: ELECTRIC WIRING & HOOK-UP, WOOD BLOCKING, METAL STUD FRAMING, AND SUPPORTS, REMOVALS, CHOPPING, PATCHING OF EXISTING, ANYTHING NOT SPECIFICALLY CALLED OUT ON GFC SHOP DWGS FINISHES FINAL CLEANING & PROTECTION.

KEY PLAN:

INFORMATION ON THIS DOCUMENT IS PROPRIETARY AND SHALL NOT BE USED, COPIED, REPRODUCED, DISCLOSED IN WHOLE OR IN PART WITHOUT WRITTEN CONSENT OF GFC ORNAMENTAL METAL AND GLASS, LLC. GFC ORNAMENTAL METAL AND GLASS, LLC ASSUMES NO RESPONSIBILITY FOR ANY ERRONEOUS WORK PERFORMED BY OTHER TRADES USING THESE DRAWINGS.

No.	Revision/Issue	Date

Prepared by
G.F.C. ORNAMENTAL METAL & GLASS, LLC.
2200 JERICHO TPKE
NEW HYDE PARK, NY
Tel: (516) 880-4655
www.gfc-omg.com

ARCHITECT:
MKDA

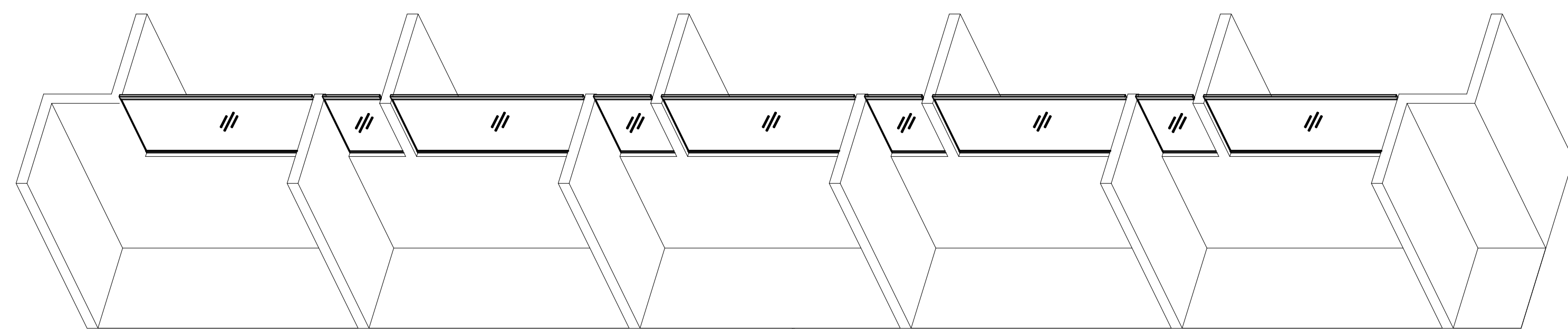
General contractor:
James E Fitzgerald

Hudson Bay Capital

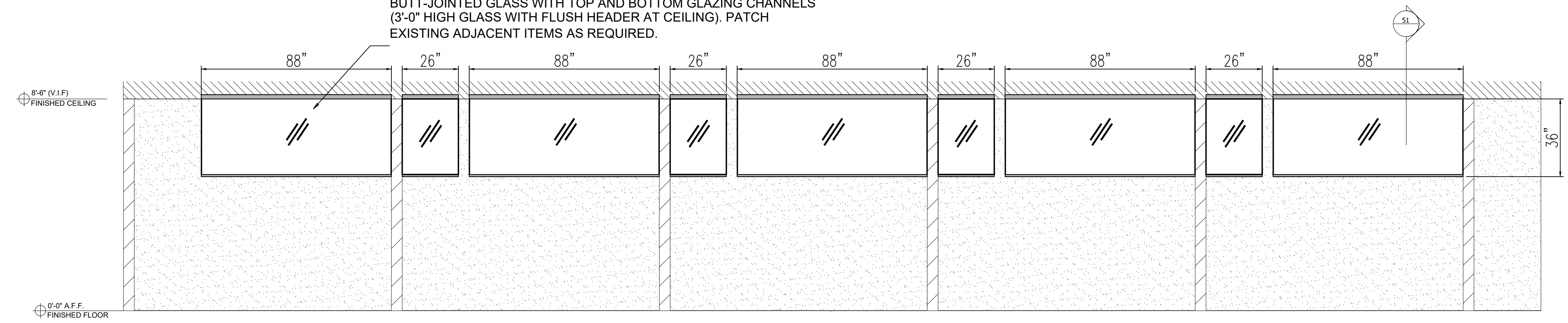
Title
Details

PM	Scale: (ARCH.)	Sheet No.
F.Z.	SEE NOTED	Z-03
Drawn by	First date of issue	
Leo	12/06/23	
Checked by	Job No.	
G.Z.	231157	

Director: G. Vespa | Designer: M. Vespa | GFC Ornamental Metal and Glass | 231058 Hudson Bay Capital 250 Harbor Dr. 3rd Floor New York, NY 10028 | 516-880-4655 | Date: 11 Dec 2023 | 13:52 - By: esep

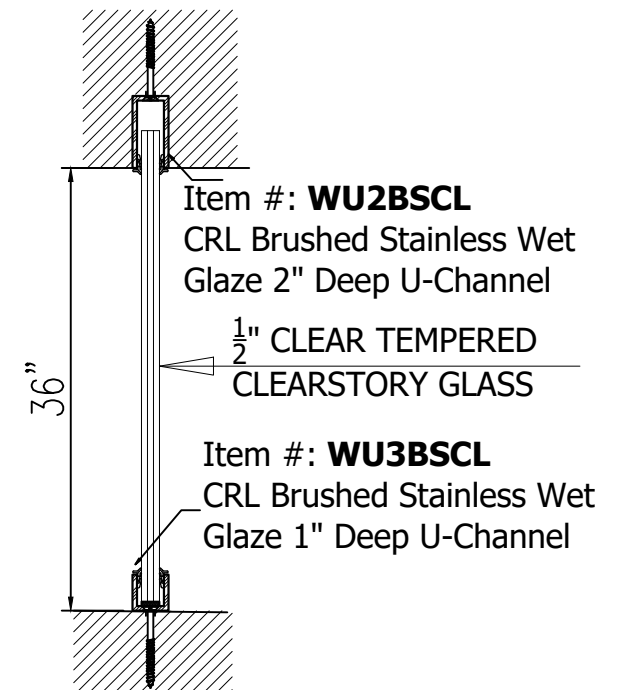


PROVIDE NEW CLEARSTORY WITH 1/2" CLEAR TEMPERED BUTT-JOINTED GLASS WITH TOP AND BOTTOM GLAZING CHANNELS (3'-0" HIGH GLASS WITH FLUSH HEADER AT CEILING). PATCH EXISTING ADJACENT ITEMS AS REQUIRED.



50 GLASS CLEARSTORY ELEVATION

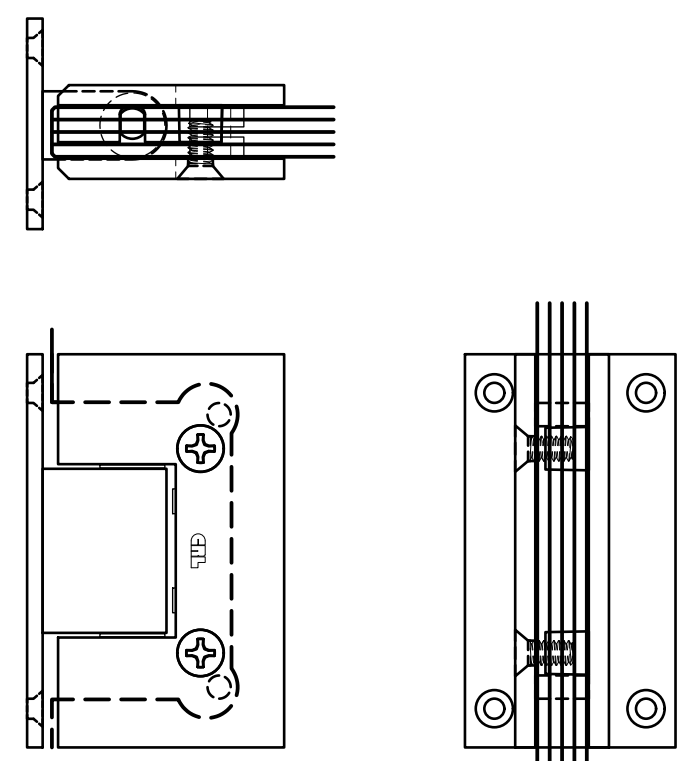
SCALE: 1/2" = 1'-0"



51 GLASS SECTION

SCALE: 1/2" = 1'-0"

V1EN037XX - CRL VIENNA SERIES WALL MOUNT FULL BACK PLATE HINGE



CRL Polished Chrome Vienna 037 Series Wall Mount 'H' Back Plate Hinge

Finish/Color: Polished Chrome

Item #: V1EH037CH

5 Degree Pre-Set	No	Maximum Door Weight - 2 Hinges	110 lbs. (49.9 kg)
Adjustable	No	Maximum Door Weight - 3 Hinges	140 lbs. (63.5 kg)
Back Plate	1/2"	Maximum Door Width	36 in. (914 mm)
Finish/Color	Polished Chrome	Mounting Type	Wall Mount
Glazing Thickness	1/2 in. (12 mm)	Self-Centering	Yes
Height	3-15/16 in. (100 mm)	Series	Vienna
Material	Brass	Width	2-1/4 in. (57 mm)

Select Dimension

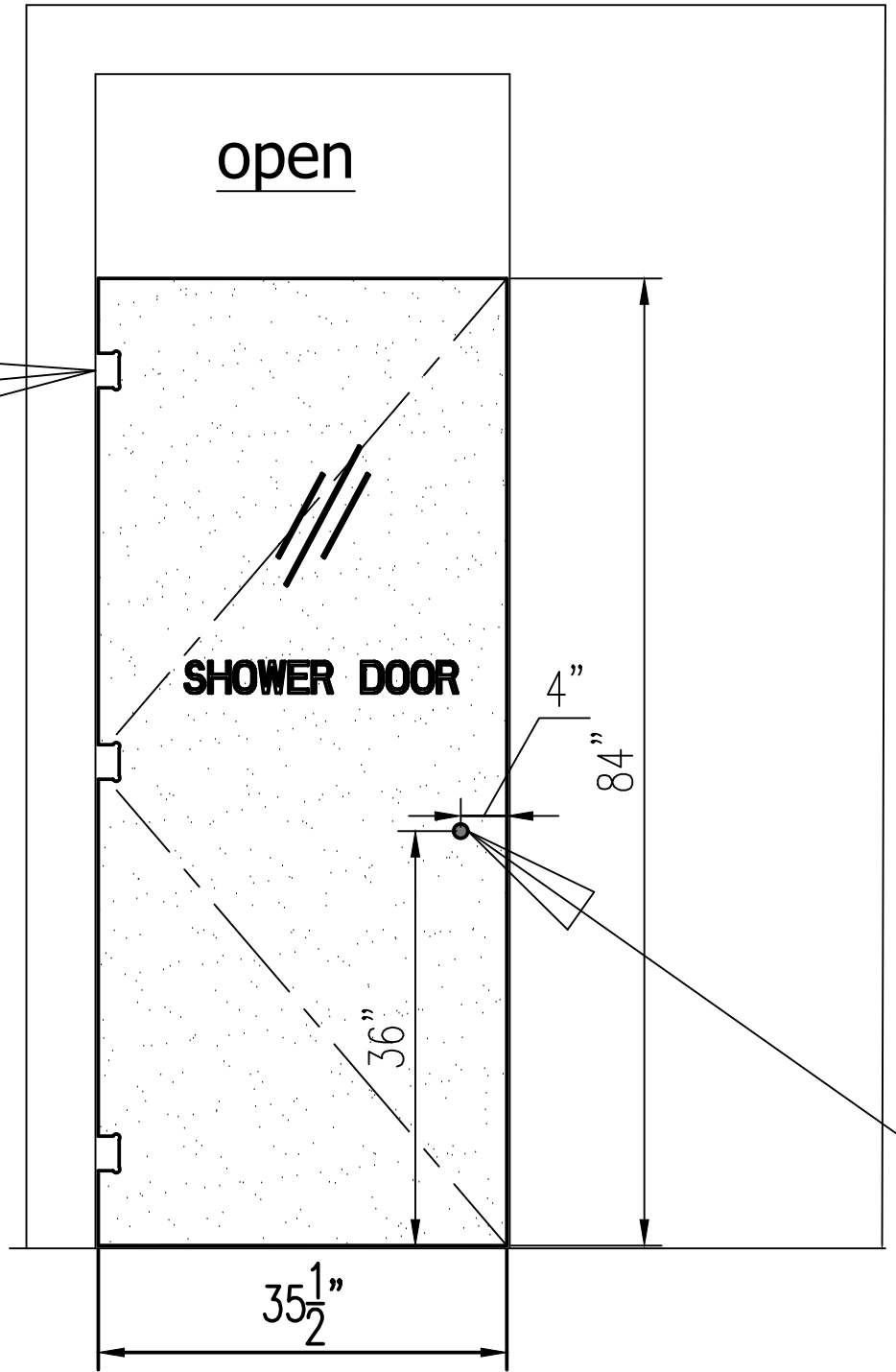
Length (L) Inches Width (W) Inches

Glass Thickness: Inches

[Get Weight](#)

Calculated Weight approximately: **136.29 lbs**

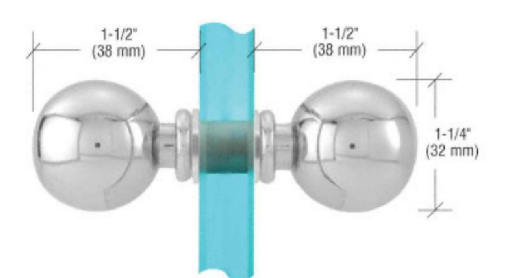
NOTE:
CALCULATED WEIGHT GLASS DOOR - 136lbs
CRL MAX DOOR WEIGHT FOR (3) HINGES - 140lbs



40 TYPICAL SHOWER GLASS ELEVATION

SCALE: 1/2" = 1'-0"

DOORS #3009, 3010, 3012, 3013
1/2" acid etch tempered glass shower doors



Item #: SDK075CH
CRL Polished Chrome Ball Style Back-to-Back Knobs
Hole Diameter Required: 1/2" (12 mm)

Finishes

General Notes

- ALL DIMENSIONS TO BE FIELD IN VERIFIED PRIOR TO FABRICATION & INSTALLATION.
- SEE OTHER DRAWINGS FOR MORE NOTES.
- CAULKING AT BUTT JOINTS TYPICAL.
- MINIMUM 1/8" GAP, U.O.N.
- WRITTEN DIMENSIONS SUPERCEDE ALL SCALED DIMENSIONS.
- ALL FASTENERS ARE 300 SERIES STAINLESS STEEL, U.O.N.
- METAL STUD FRAMING & WOOD BLOCKING NOT BY GFC DMG.
- ALL GLASS JOINTS, ALL GLASS SIZES WILL HAVE A TOLERANCE OF ±1/8", U.O.N.
- SEE GFC DMG DWG # Z-000 FOR GLASS FINISH SCHEDULES & LOCATION OF ALL ITEMS.
- ANY MATERIALS LISTED w/LEAD TIMES ARE APPROX. AFTER FIELD SIZES HAVE BEEN TAKEN OR APPROVED / GUARANTEED DIMENSIONS.
- GFC EXCLUDES THE FOLLOWING ELECTRIC WIRING & HOOK-UP, WOOD BLOCKING, METAL STUD FRAMING, AND SUPPORTS, REMOVALS, CHOPPING, PATCHING OF EXISTING. ANYTHING NOT SPECIFICALLY CALLED OUT ON GFC SHOP DWGS FINISHES FINAL CLEANING & PROTECTION.

KEY PLAN:

INFORMATION ON THIS DOCUMENT IS PROPRIETARY AND SHALL NOT BE USED, COPIED, REPRODUCED, DISCLOSED IN WHOLE OR IN PART WITHOUT WRITTEN CONSENT OF GFC ORNAMENTAL METAL AND GLASS, LLC. GFC ORNAMENTAL METAL AND GLASS, LLC ASSUMES NO RESPONSIBILITY FOR ANY ERRONEOUS WORK PERFORMED BY OTHER TRADES USING THESE DRAWINGS.

No.	Revision/Issue	Date

Prepared by
G.F.C. | ORNAMENTAL METAL & GLASS, LLC.
2200 JERICHO TPKE
NEW HYDE PARK, NY
Tel: (516) 880-4655
www.gfc-omg.com

ARCHITECT:
MKDA

General contractor:
James E Fitzgerald

Hudson Bay Capital

Details

PM	Scale: (ARCH.D)	Sheet No.
F.Z.	SEE NOTED	
Drawn by	First date of issue	Z-04
Leo	12/06/23	
Checked by	Job No.	
G.Z.	231157	
Approved by		
G.Z.		

Director: G. Vesera | Designer: M. Vesera | GFC Ornamental Metal and Glass | 231058 Hudson Bay Capital 280 Harbor Dr. 3rd Floor, New York, NY 10001 | 12/06/23 | 13:53 | B1: esg